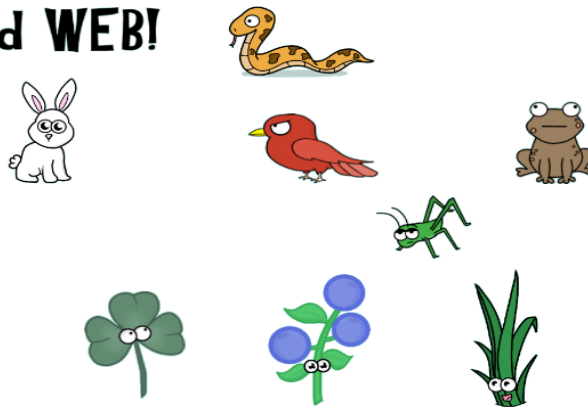


8. For the **food web** below, please draw in **arrows** to represent the correct direction of energy flow.

FOOD WEB!



Please use the above food web to determine whether there is an *increase*, *decrease*, or *no change* for each organism type in the chart below based on the given scenario. When filling in the empty boxes, please explain why you determined an increase, decrease, or no change. Two boxes have been filled in for you!

Scenario	Frogs	Grasshoppers	Snakes	Producers
There are types of pathogenic fungi that can attack living amphibians (such as frogs). One of these types of fungi is known as the Chytrid fungus. For each of the following organisms in the table, describe how each organism population might be affected by a Chytrid fungus infestation.	<i>Decreasing due to infestation of Chytrid fungus, which is harming frog population.</i>	9.	10.	11.
Grasshoppers can be extreme pests for farmers as they can damage crops. For each of the following organisms in the table, describe how each organism population might be affected by a significant grasshopper population increase such as a visiting locust swarm.	12.	<i>Increasing due to visiting locust swarm.</i>	13.	14.

15. Which of the following contributes more to **ecosystem sustainability**: the food web on this page or the food chain on the other page? Explain your answer in terms of **biodiversity**.